

## Cotter Split Pin

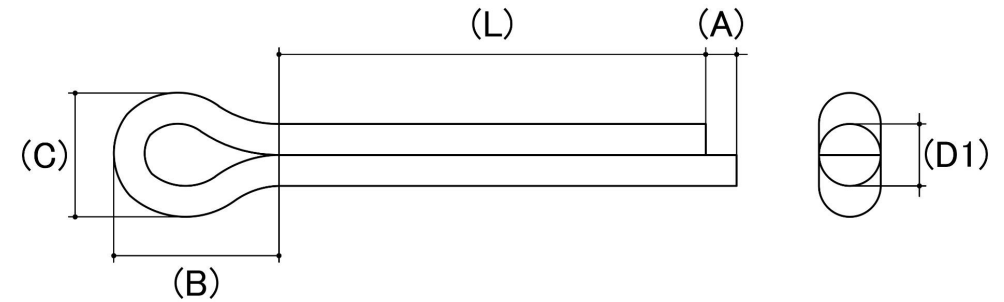
**Material:** Steel

**Class Grade:** Low Tensile Class 4.6

**Finish:** Zinc Plated

**Corrosion Protection Level:** Moderate

**Standard:** DIN 94



*CAD drawings shown for graphic representation only.\**

Size	Pin Diameter (D) (mm)		Eye Diameter (C) (mm)		Eye Length (B) (mm)	Prong Length (A) (mm)		Hole Size To Suit (mm)	sku (qfind)
	Min	Max	Min	Max	Nom	Min	Max	Nom	
M1.6	1.30	1.40	2.40	2.80	3.20	1.30	2.50	1.60	3716
M2	1.70	1.80	3.20	3.60	4.00	1.30	2.50	2.00	372
M2.5	2.10	2.30	4.00	4.60	5.00	1.30	2.50	2.50	372.5
M3.2	2.70	2.90	5.10	5.80	6.40	1.60	3.20	3.20	373.2
M4	3.50	3.70	6.50	7.40	8.00	2.00	4.00	4.00	374
M5	4.40	4.60	8.00	9.20	10.00	2.00	4.00	5.00	375
M6.3	5.70	5.90	10.30	11.80	12.60	2.00	4.00	6.30	376.3
M8	7.30	7.50	13.10	15.00	16.00	2.00	4.00	8.00	378
M10	9.30	9.50	16.60	19.00	20.00	3.15	6.30	10.00	3710
M13	12.10	12.40	21.70	24.80	26.00	3.15	6.30	13.00	3713

**Disclaimer:**

Dimensional data and technical information was obtained from publically available sources and not acquired through standard agencies. It has been completed and compiled for reference purposes only; where discrepancies are found they are subject to change without notice. Bolt & Nut Australia makes no warranties or representations regarding the accuracy and validity of the compiled information and data. Contact the relevant standard authorities for accurate and detailed information.

\* CAD drawings may not reflect diameter, thread length or overall length.

© Bolt & Nut Australia Pty Ltd. All rights reserved.

Version: 18 Mar 2024